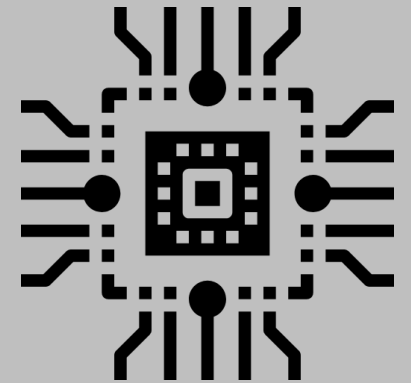


THE (R)EVOLUTION OF STEVE JOBS

EDUCATOR'S GUIDE





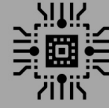
MASON
BATES,
composer



MARK
CAMPBELL,
librettist

THE (R)EVOLUTION OF STEVE JOBS

Cast



John Moore, baritone

Steve Jobs

<https://www.singmoore.com/>



Sarah Larsen, mezzo soprano

Laurene Powell Jobs

<https://www.sarahlarsenmezzo.com/>



Bille Bruley, tenor

Steve Wozniak

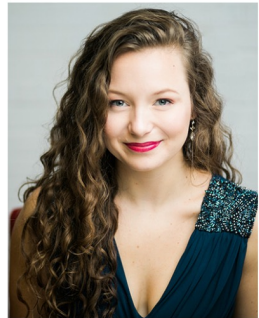
<https://www.billebruley.com/>



Wei Wu, bass

Kōbun Chino Otogawa

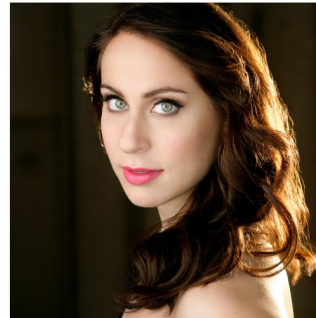
<https://weiwubass.com/>



Madison Leonard, soprano

Chrisann Brennan

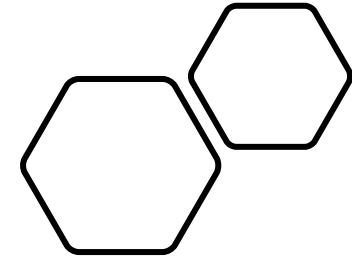
(Austin Opera and Lyric Opera Kansas City)
<https://www.madison-leonard.com/>



Elizabeth Sutphen, soprano

Chrisann Brennan

(Atlanta Opera)
<http://www.elizabethsutphen.com/>



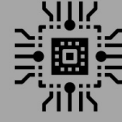
THE
ATLANTA
OPERA

AUSTIN
OPERA

LYRIC
OPERA KC

THE (R)EVOLUTION OF STEVE JOBS

Artistic & Creative Team



Timothy Myers
Conductor (Austin)
<http://timothymyers.com/>



Tomer Zvulun
Director
<https://www.tomerzvulun.com/>



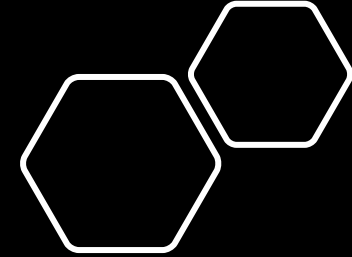
Michael Christie
Conductor (Atlanta and Kansas City)
<https://www.michaelchristieonline.com/>



Jacob A. Climer
Scenic & Costume Design
<http://www.jaclimer.com/>



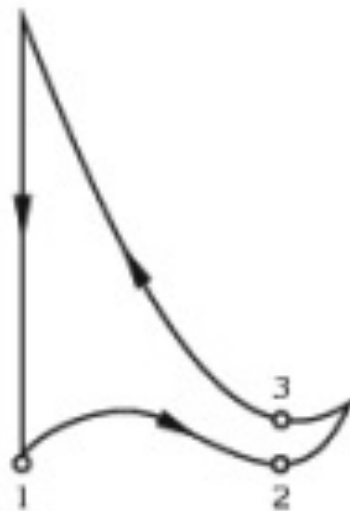
S. Katy Tucker
Projection Design
<http://www.skatyucker.com/>



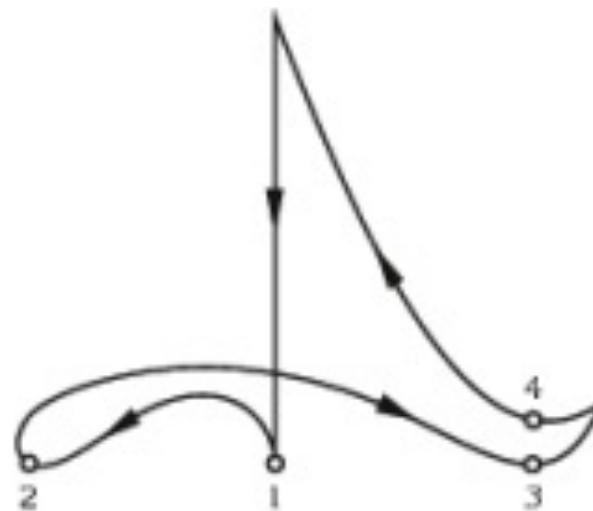
CONDUCTING PATTERNS



2
4



3
4



4
4

THE (R)EVOLUTION OF STEVE JOBS

Instrumental excerpt
from “The Rise and
Fall of Steve Jobs”

136

C

57 (beats out)
Orch. *marcatiss.*
(brass) *f*

60 (sim.)
Orch. *mf* *f*

63
Orch.

66
Orch. *ff* *fp* *mf*

70
Orch. *ff con brio* *ff* *p* *ff*
horn *p* *ff* *p* *ff*
ffp *f*

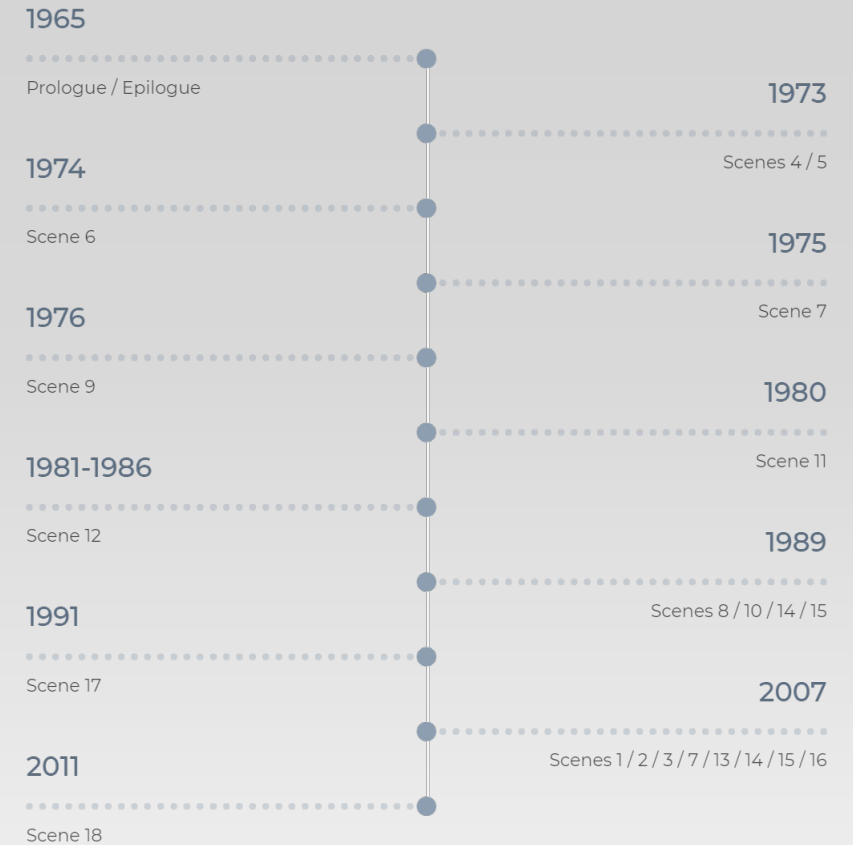
The image shows a page of a musical score for an orchestral piece. The page number 136 is at the top left. A rehearsal mark 'C' is at the top center. The score is written for an orchestra, with staves for brass, woodwinds, and strings. The key signature has two flats (B-flat and E-flat), and the time signature is 4/4. The score includes various musical notations such as notes, rests, and dynamic markings. The first system (measures 57-60) features a brass section playing a rhythmic pattern with the instruction '(beats out)' and 'marcatiss.' (marcato). The second system (measures 60-63) shows a string section playing a melodic line with the instruction '(sim.)' (simile). The third system (measures 63-66) features a woodwind section playing a melodic line. The fourth system (measures 66-70) shows a string section playing a melodic line with the instruction 'ff con brio'. The fifth system (measures 70-73) features a horn section playing a melodic line with the instruction 'p' (piano). The score is written in a standard musical notation style with various dynamic markings and articulations.

TIMELINE COMPARISONS

The (R)evolution of Steve Jobs

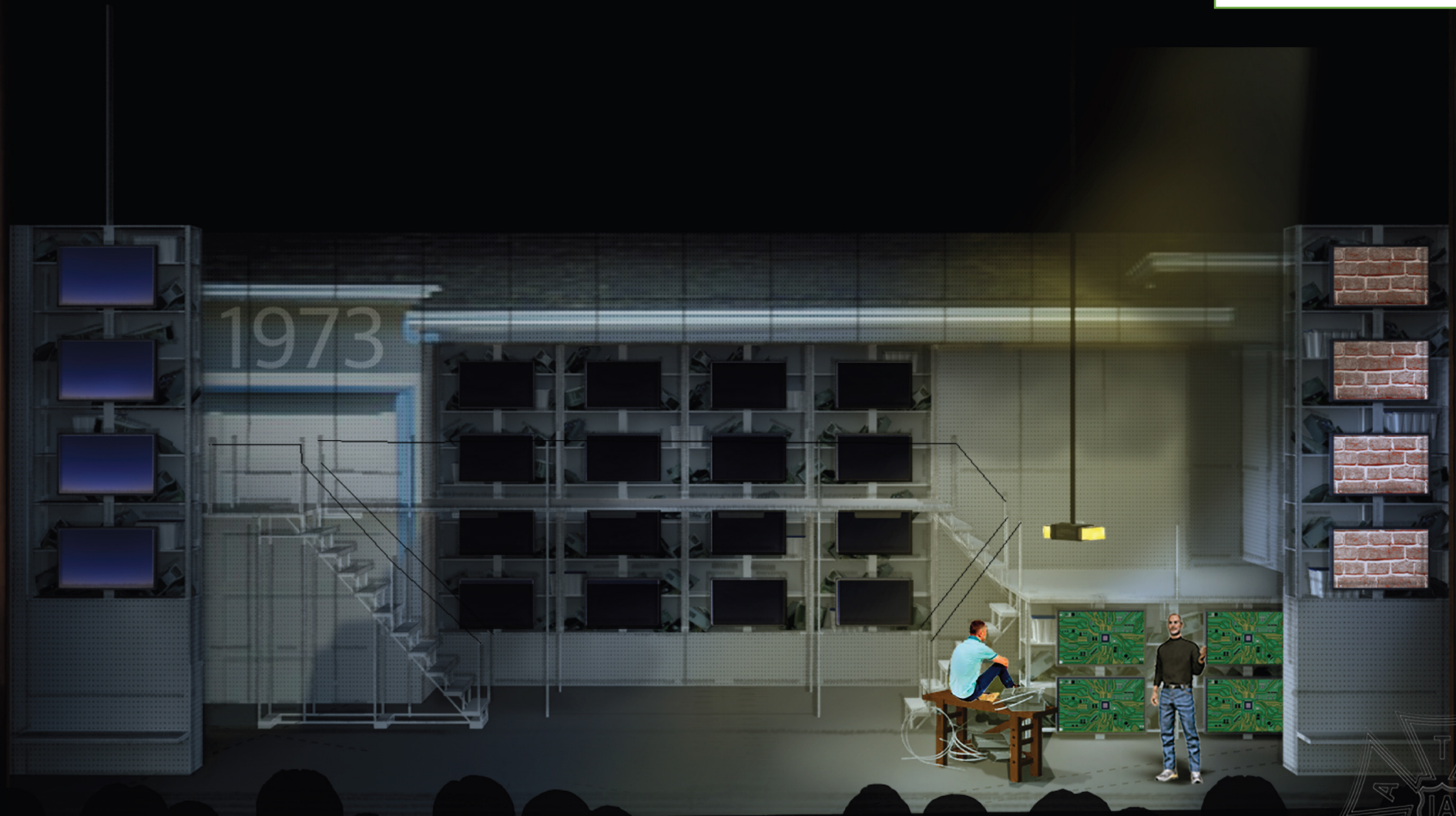


The (R)evolution of Steve Jobs



THE ®EVOLUTION OF STEVE JOBS

Design by Jacob A Climer
and S. Katy Tucker



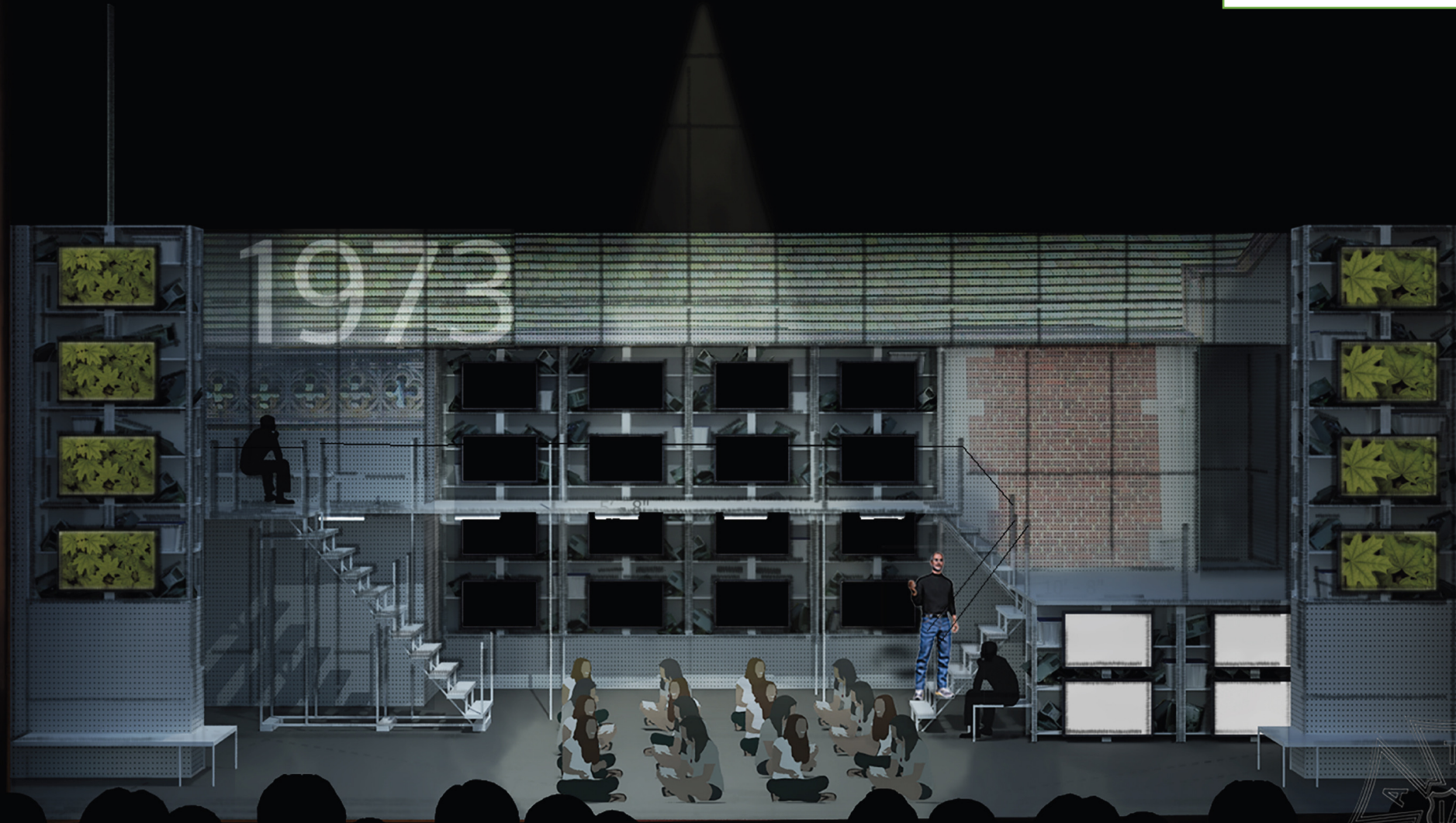
SCENIC DESIGN - JACOB A CLIMER / PROJECTION DESIGN - S. KATY TUCKER

A DECENT SLINGSHOT



THE ®EVOLUTION OF STEVE JOBS

Design by Jacob A Climer
and S. Katy Tucker



SCENIC DESIGN - JACOB A CLIMER / PROJECTION DESIGN - S. KATY TUCKER



THE ®EVOLUTION OF STEVE JOBS

Design by Jacob A Climer
and S. Katy Tucker



SCENIC DESIGN - JACOB A CLIMER / PROJECTION DESIGN - S. KATY TUCKER



THE ®EVOLUTION OF STEVE JOBS

Design by Jacob A Climer
and S. Katy Tucker



SCENIC DESIGN - JACOB A CLIMER / PROJECTION DESIGN - S. KATY TUCKER



THE [®]EVOLUTION OF STEVE JOBS

Design by Jacob A Climer
and S. Katy Tucker

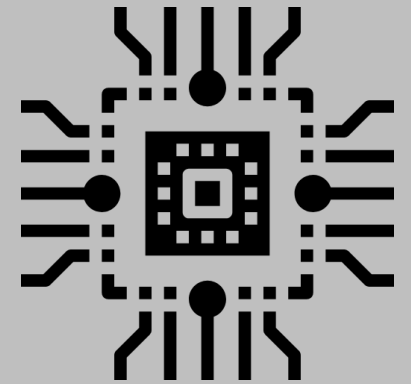


SCENIC DESIGN - JACOB A CLIMER / PROJECTION DESIGN - S. KATY TUCKER



THE (R)EVOLUTION OF STEVE JOBS

EDUCATOR'S GUIDE



THE
ATLANTA
OPERA

AUSTIN
OPERA

LYRIC
OPERA KC