

# The Atlanta Opera Orchestra

## Principal Trombone

### Audition Repertoire

#### Solo Repertoire

- |          |                       |                    |
|----------|-----------------------|--------------------|
| 1. David | Concerto for trombone | First movement A-D |
|----------|-----------------------|--------------------|

#### Excerpts

- |                |  |  |
|----------------|--|--|
| 1. Wagner      | 1a. Lohengrin<br>1b. Lohengrin<br>1c. Lohengrin<br>1d. Lohengrin | Act 1 Vorspiel 9th of 2 to 5th of 3<br>Act 1 Scene 3 46 to 6 before 47<br>Act 3 Einleitung before scene 1 24 after 1 to 1 after 3<br>Act.3 scene 3 47-48 |
| 2. Wagner      | Tannhäuser.  | Overture 1 before M to the end   |
| 3. Wagner      | Die Walküre  | Act 3 scene 1 36-77. 122-140   |
| 4. Mozart      | Requiem  | Tuba Mirum 2nd trombone solo Beginning to 35   |
| 5. Saint Saëns | Symphony 3.  | Letter Q to 2nd of S   |
| 6. Ravel       | Bolero   | 3rd of 10 thru 11  |
| 7. Strauss.    | Salome   | Dance little i to 3 after k  |
| 8. Rossini     | William Tell Overture  | C to 8 before E  |
| 9. Verdi.      | Forza del Destino  | Letter I to the End  |
| 10. Verdi      | 10a. Othello<br>10b. Othello                                     | Act 1 After 00 to Allegro Sost<br>Act 2 after repeated letter E to F   |



# CONCERTINO

## #1 SOLO

in E $\flat$  major, Opus 4  
for Trombone and Piano\*

Edited by WILLIAM GIBSON

### TROMBONE

FERDINAND DAVID  
(1810-1873)

**Allegro maestoso** ( $\text{♩} = 126$ )

Viol. **Start** **A Solo** **ff**

*p* *mf* *cresc.*

*f* **B** *ff*

*dim.* *p*

*cresc.*

*poco rit.* **C a tempo** *Viol.* *Solo* *p dolce*

*dim.* *mf*

*p* *f*

*f* *p* *ff*

\*Originally for Trombone and Orchestra.



*dolce p* *mf* *ff* *cresc.* **D End**

Viol. 25 26 27 28 29 *f* *ad lib. quasi Recit.*

**Andante marcia funebre (♩ = 76)**

Oboi *pp* Viol. *mf*

Oboi Viol. Solo *mf*

1

*mf* *cresc.* *ff* *p* 2

*p dolce*

1

*mf* *morendo*

*ff* *pp* **Allegro maestoso**



#1a

# Richard Wagner Lohengrin

## TROMBONE I.

### AKT I.

#### VORSPIEL.

Langsam.

Viol. I.

19 1 17 2 7

*p* *dimin.* *p* *dimin.* *p*

*cresc.* *f* sehr gehalten *ff* *ff* *dimin.*

*pp* *pp* *pp* *pp* *dimin.* *pp* *dimin.*

#### SCENE I.

Ziemlich lebhaft.

Viol. I.

7 3 3 3 4 11 7

*mf* *cresc.* *ff* *fp*

Lebhaft. Königl. Feierlich. Königl.

8 5 12 6 8 10

der Noth des Reiches seid von mir ge- *f* mit will dem

Drohen rüstet sich der *p* *cresc.* *f* *p* *cresc.* *f* *mf*

*mf* *p* *ff* *f*

8 1 2 17 2 11 9 13 1 1 2

Feierlich. lebhaft bewegt Friedr.

und nahm ein Weib, das meinem Sinn ge- *ff*

10 5 2 7 1 11 6 nicht schleppend

*fp* *fp* *p* *f* *dim. p*

im Zeitmass, sehr lebhaft Königl. ritard. wie vorher

17 5 12 7

*p* *piu p* *f* *dim.* *p* *cresc.* *ff* *ff* *p* *ff*

Langsam.



## #1b

Wagner — Lohengrin

**TROMBONE I.**

## #1b



### AKT III.

[illegible]

7 20 8 24 9 22 10 7 Acht Frauen.  
Wie Gott eruch er - lig weih - te zu  
12 Tempo I. 16 13 24 14 22  
pp < > < > pp < > pp 8

15 *Sanft ruhig.* 17 4 16 6 8 17 10 18 8 2 19 12 3 20 6

*Langsam.* *Lebhaft.* *Langsamer.* *Lebhafter.* *Ruhig bewegt.*

1 6 2 21 3 5 4 22 13 23 22 24 15 25 15

*rit.*

26

**Ruhig.**

17

7

Elsa.

schwer vor Schuld Ver. dacht.

durch mich und Schweigens Kraft be-



#1d

Wagner — Lohengrin

## 12 ACT III Scene III TROMBONE I.

47

48

49

50

51

52

53 Langsam. 19 54 Sehr schnell. Bassl

55

Langsamer.



#2

## TANNHÄUSER

## Overture

(Concert Version)

R. Wagner  
ed. by F. Hoffmann  
(06994)Property of  
Lincoln Orchestra Assoc.

## TROMBONE I

Andante maestoso (♩ = 50)

36 A

43 3 *f ff* 3 *ff* 3

51 27 B Allegro (♩ = 80) 31 C 12 D 18

142 E 30 F 20 *un poco ritenuto* G 25 H *un poco accel.* I 31 K 28 *Molto vivace*

301 4 6 L 49 *ff*

369 9 M Assai stretto *un poco accel.* *f ff* 3

390 *ff* 3

402 0

417

430 Più stretto *ff*

Luck's Music Library



#3

Die Walküre III. Aufzug.  
I. SCENE.

Vivace.

35 36 40 58 63 70

*f* *più f* *ff* *ff*

## Trombone I.

11

123 132 139 142 150

*ff* *ff* *ff* *f* *più f* *f* *più f* *ff*



# MOZART Tbn 2

#4

## 2. Tuba mirum

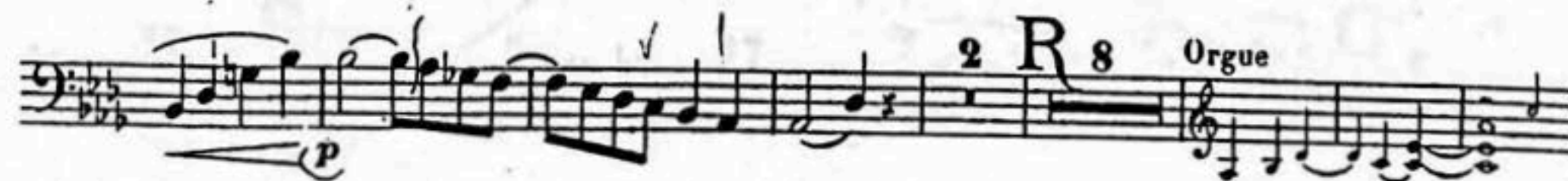
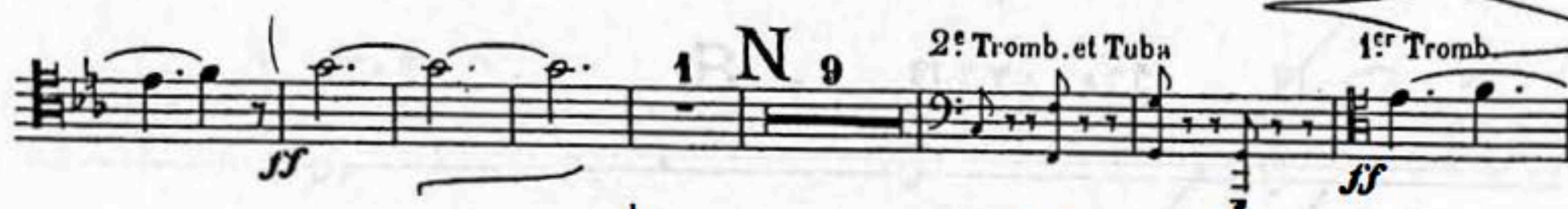
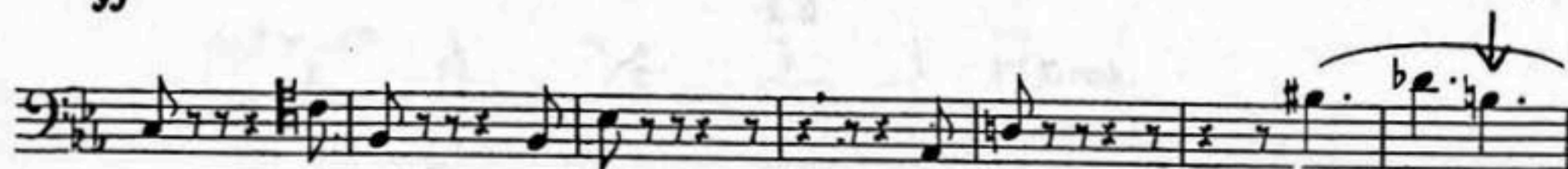
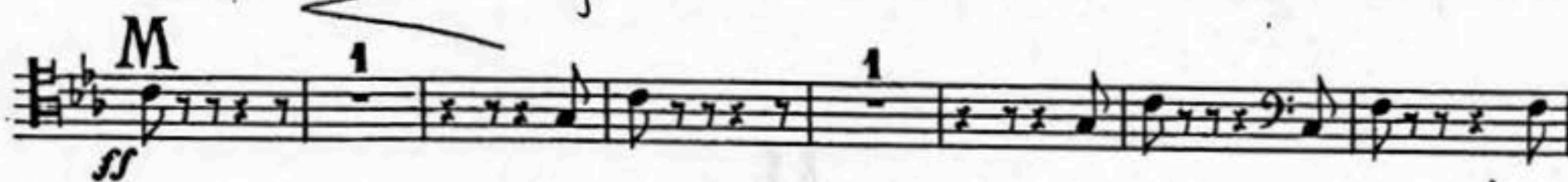
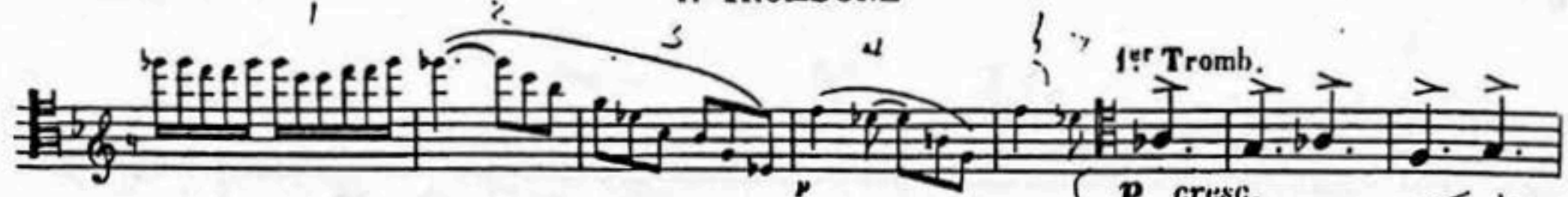
Andante

Handwritten musical score for Tuba 2 in Mozart's 'Tuba mirum'. The score is written on eight staves, each with a 3/8 time signature and a key signature of one flat (B-flat). The tempo is marked 'Andante'. The score begins with a bracket on the first staff, indicating the start of the piece. The first staff contains a forte (*f*) dynamic marking, followed by a mezzo-forte (*mf*) dynamic marking. The second staff contains a mezzo-forte (*mf*) dynamic marking. The third staff contains a mezzo-forte (*mf*) dynamic marking. The fourth staff contains a mezzo-forte (*mf*) dynamic marking. The fifth staff contains a mezzo-forte (*mf*) dynamic marking. The sixth staff contains a piano (*p*) dynamic marking. The seventh staff contains a forte (*f*) dynamic marking, followed by a fortissimo (*fp*) dynamic marking. The eighth staff contains a fortissimo (*fp*) dynamic marking. The score includes various musical notations such as notes, rests, and slurs. The score is numbered 1 through 35, with a final measure marked 28. The score is written in a clear, legible hand.



#5

## 2 SAINT-SAËNS Symphony - 3 (ORGAN)

1<sup>re</sup> TROMBONE



# Saint-Saëns

# Symphony 3 Cont.

#5 con't

1<sup>er</sup> TROMBONE

3

1<sup>er</sup> Tromb. 1 2 V 19 X

Orgue

Fl.

pp

13 T 9 U 6

S

## II

All.<sup>o</sup> mod.<sup>to</sup>

Fl.

1<sup>er</sup> Tromb. p

3 A Fl. 21 B 7 Fl. Fl.

1<sup>er</sup> Tromb. f

C 1 5 2

Presto

9 D Fl. 11 E 2<sup>nd</sup> Vns

11 F 2<sup>nd</sup> Vns 3 17 1<sup>st</sup> Vns

G 1<sup>er</sup> Tromb. f

14 1<sup>st</sup> Vns

H 1<sup>er</sup> Tromb. 7 I 8



# BOLERO

MAURICE RAVEL

#6

1<sup>er</sup> et 2<sup>e</sup> TROMBONES

9

TACET jusqu'à 10

Hrb



10

1<sup>o</sup> Solo

mf sostenuto



Don't Rush

Don't push



11

Keep



17 12 18 13 10

ple Fl





1. Posaune.

11

#7

*viel bewegter*

8 S 9 T 8 U 1 2. Pos.

*ritard.* 1 3 V *wieder etwas müssiger* *accelerando wieder etwas müssiger*

*acceler.* 2 W *wieder etwas müssiger* *poco accelerando* *allmählig bewegter*

X 9 *accelerando* 1 Y *Sehr schnell.* 12 Z 4 a 8 b 8 c 8

d 8 *acceler.* *Tuba* *f marcato*

1 8 4 *mf* 4 h *ff* 1 *ff*

*sempre più acceler.* 4 G.P. *Sehr schnell.* *marcato* *ff*

d = d. des *f*

k *cresc.* *cresc.* *ff* *Etwas langsamer.* 1 *Sehr schnell.* 15 5

Zur Concertaufführung.

1



#8

## zur Oper „Wilhelm Tell“.

**Tenorposaune I.** G. Rossini

Andante. (♩ = 64) Allegro. (♩ = 104)

23 A 24 30 B 8 9 10

Viol. II.

11 12 13 14

C

*ff*

6

4

D

1 1 1

E 28 120 F 13 G 15

*p*

Andante. (♩ = 76)

3



# VERDI ~~FORZA~~ FORZA del DESTINO

TBN 1

4

#9

ff

*p*  
*Soli*  
*p*

*pp*  
*legato*  
*pp*

=VIII=



#9 con't

# Forza Cont

5

Handwritten musical notation system 1. It features a grand staff with treble and bass clefs. The key signature has two sharps (F# and C#). The time signature is 2/4. The system includes dynamic markings: *dim.* (diminuendo), *p* (piano), and *res.* (resonance). A large handwritten 'L' is at the top left, and a large '8' is in the middle. The notation includes various note values, rests, and slurs.

Handwritten musical notation system 2. It continues the grand staff notation. It includes dynamic markings: *f* (forte), *ff* (fortissimo), and *dim.* (diminuendo). A large handwritten 'M' is at the top left, and a large '2' is in the middle. The notation includes various note values, rests, and slurs.

Handwritten musical notation system 3. It continues the grand staff notation. It includes dynamic markings: *ff* (fortissimo). A large handwritten 'N' is at the top right, and a large '19' is in the middle. The notation includes various note values, rests, and slurs.

Handwritten musical notation system 4. It continues the grand staff notation. It includes dynamic markings: *ff* (fortissimo). The notation includes various note values, rests, and slurs.

Handwritten musical notation system 5. It continues the grand staff notation. It includes dynamic markings: *p* (piano). A large handwritten '8' is at the bottom right. The notation includes various note values, rests, and slurs.



*PIÙ ANIMATO*

*ff*

*sempre accentatiss.*

*ff*







# OTHELLO ACT II second group of Letters (A-Z) AFTER E

#10b

1 sciagu - 10 *ff*

1 *mf*

5 è pe - riglio *f* 5 per l'uni-

15 verso 24 H 18 I AND. <sup>no</sup> 1 J PIÙ ANIM. <sup>to</sup> 6

8 ei disse poscia il rio 2 si mu - 3 tò 5 PIÙ MOSSO